

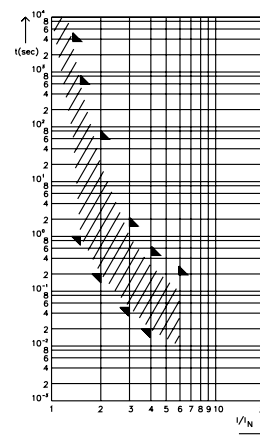
CF Fuse Rated 58V



Specifications

LWS 155.0892
 DIN 72581/6
 UL 248 Special Purpose Fuses
cULus Recognized: File No. E211637
Insulating body: Out of ceramic
Cover: Out of thermoplast (UL 94-V0, heat resistant)
 Visible melting-element
Packaging unit: 100 pieces
Breaking capacity 2,000A, 58 VDC

Pre-arcing Time - limits / Schmelzeit-Grenzwerte DIN



$I_f = 1.25$ (max. operating current:
 $0.8 \times I_{rat}$ at 23°C)

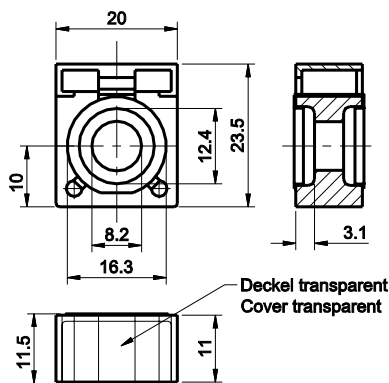
Time-Current Characteristics / Schmelzeit-Grenzwerte

% of Rating % des Nennstromes	Opening Time Min / Max (s) Schmelzcharakteristik Min / Max (s)
100	100 h / -
135	- / 3,600 s
150	1 s / 600 s
200	200 ms / 60 s
300	50 ms / 1,5 s
400	20 ms / 500 ms
600	- / 200 ms

Main Fuse for mounting with battery clamp on the battery pole.
 Voltage rating 58 VDC, Current rating 50A - 300A. With
 transparent cover for visual inspection of melting element.

Hauptsicherung zur Montage an der Batterieklemme.
 Nennspannung 58 VDC, Nennstrom 50A bis 300A. Transparente
 Abdeckung für visuelle Überprüfung des Schmelzelements.

Dimensions in mm /
Maße in mm



Part Number Artikel-Nr.	Current Rating Nennstrom	Typ. Voltage Drop Typ. Spannungsfall	Cold Resistance Kaltwiderstand	I^2t
155.0892.5501	50 A	100 mV	1.20 mΩ	1,900 A ² s
155.0892.5751	75 A	90 mV	0.60 mΩ	12,000 A ² s
155.0892.6101	100 A	80 mV	0.60 mΩ	14,000 A ² s
155.0892.6121	125 A	75 mV	0.45 mΩ	51,000 A ² s
155.0892.6151	150 A	70 mV	0.35 mΩ	63,800 A ² s
155.0892.6171	175 A	70 mV	0.25 mΩ	120,000 A ² s
155.0892.6201	200 A	65 mV	0.25 mΩ	172,800 A ² s
155.0892.6251	250 A	70 mV	0.20 mΩ	330,000 A ² s
155.0892.6301	300 A	70 mV	0.15 mΩ	372,000 A ² s

Insert CF8-Fuse links only in conjunction with the insulating nuts, see Section "Fuse Holders."
 Corresponding battery clamp see Section "Fuse Holders."